



# GMT MONTHLY MEMBERSHIP PROGRESS REPORT

Results as of: 5/31/2019

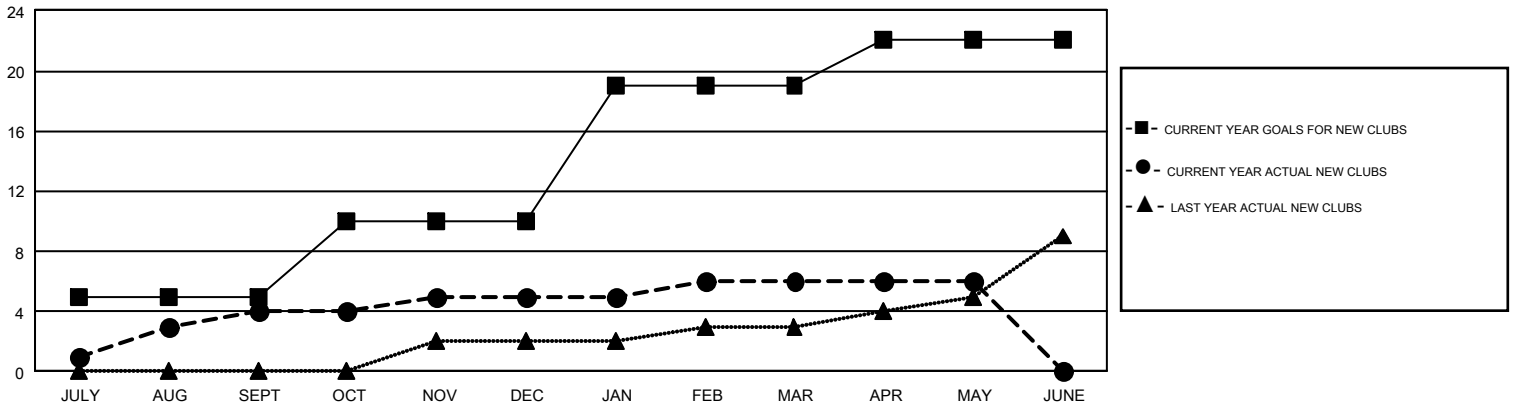
## GMT Constitutional Area 2, Group B

GMT: CHRIS LEWIS

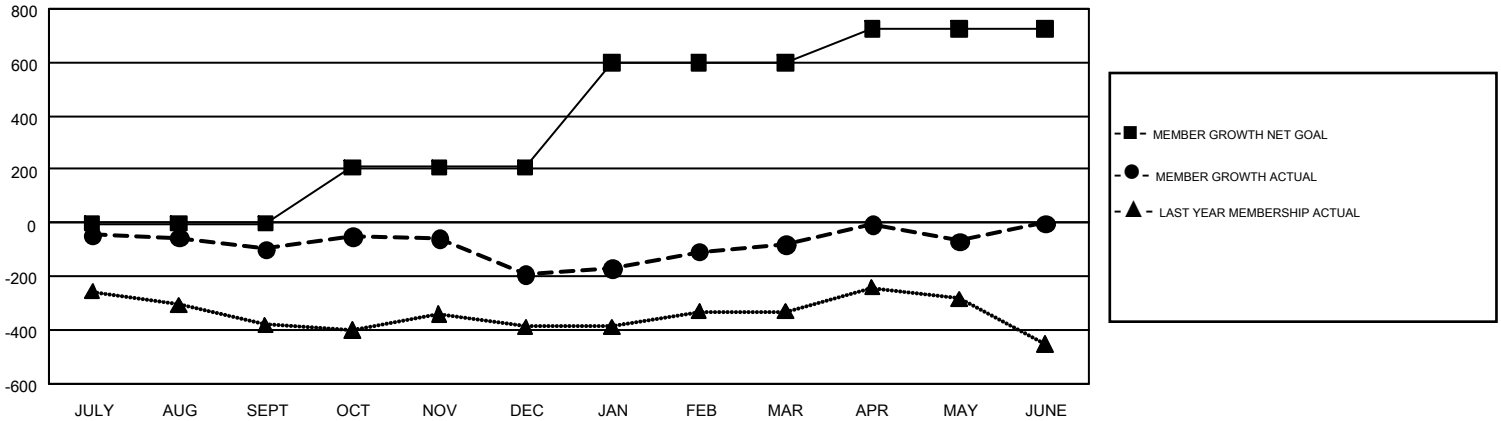
REPORT DOES NOT INCLUDE CLUBS IN UNDISTRICTED AREAS.

Clubs				Members			
RESULTS FOR 2018-2019				RESULTS FOR 2018-2019			
QUARTER	NEW CLUB GOAL	NEW CLUBS	DROPPED CLUBS	QUARTER	MEMBER GROWTH NET GOAL	MEMBER GROWTH ACTUAL	DROPPED MEMBERS ACTUAL (including transfers)
JULY/AUG/SEPT	5	4	2	JULY/AUG/SEPT	-2	365	405
OCT/NOV/DEC	5	1	3	OCT/NOV/DEC	210	584	622
JAN/FEB/MAR	9	1	1	JAN/FEB/MAR	392	580	408
APR/MAY/JUNE	3	0	1	APR/MAY/JUNE	125	353	307

GOALS AND ACTUAL NEW CLUBS CUMULATIVE



GOALS AND ACTUAL MEMBERS CUMULATIVE



DROPPED CLUBS: 7	490 CLUBS OF 777 ADDED 1 OR MORE NEW MEMBERS	<b>GENDER DISTRIBUTION</b> MALE 12,921 (68.75%) FEMALE 5,874 (31.25%)
<b>DROPPED MEMBERS</b> DECEASED 285 CLUB CANCELLED 29 OTHER 1,426 <b>TOTAL 1,740</b>	<a href="#">CLICK HERE FOR CUMULATIVE MEMBERSHIP DATA</a>	TOTAL FAMILY UNIT MEMBERS 3,460 FAMILY MEMBERS PAYING HALF DUES 1,770